

Bits & Pieces

Fall, 2014 - Volume 12

Executive Board 2014—2015

President:
Pam Mulveyhill

Vice President:
Pat Arcese

Secretary:
May Reed

Treasurer:
Midge Reed

Chairpersons

Programs:
Jeanie Weinrich, Mary Rhys
Denise Conton

Sunshine:
To Be Announced

Newsletter/Website:
Anne Ford

Librarian:
Charlotte McCane
Ruler Lending Library
Pat Arcese

Historian:
Pam Mulvyhill, Penny Bartlett

Hospitality:
Mary Hayes

Membership:
Kathleen O'Grady

Comfort Quilts:
Ursula Lincoln, Cheryl Kelley

Raffle Tickets
Permit & Ticket Printing:
Evelyn Barker

Selling at Meetings:
Martha Jones

Raffle Quilt Showings:
2015 Raffle Quilt
Mary Rhys, Joanne Kirker

Raffle Quilt 2016
To Be Announced

Barnstable County Fair
To be Announced

Secret Sister:
Mary Rhys, Pat Arcese

Ways & Means
Penny Bartlett, Regina Martin

Monthly Raffle
Mary Rhys

Presidents Message



Dear Holly Berry Quilters,

It's hard to believe that September is already here! I hope that your summer has been filled with family, friends, good times, and/or whatever makes you smile.

A planning meeting was held on the 21st of August at the fairgrounds and the turnout was wonderful! We planned, discussed, scheduled, added some things, changed some things around (Show & Tell is back) – if we have a speaker (with the exception of Ade-

le Scott on Oct. 23) the speaker will go first, we will have a brief meeting and Show & Tell after! I think you'll love what has been planned for the Fall.

As we discussed speakers, we left some latitude in the schedule to allow for the speakers' scheduling needs. There may be changes, and email, telephone calls and/or postcards will go out as soon as we have enough info to pass along in an effort to let everyone know about scheduling changes as soon as is possible.

The fall dates are on the schedule of the Fairgrounds with meeting days set (2 project days are still under consideration by the Fairgrounds staff). They have taken on the Scallop Festival as well as a number of other (money making) events that may af-

fect our schedule with the meeting room. I will endeavor to confirm the spring meeting and project dates as soon as possible to facilitate planning. Patience may be in order...

The September 11th meeting will have lots of 'beginnings' and info. I've included some of the items to be discussed on the program schedule – located elsewhere in this newsletter - to give you planning time. Info and pictures will be posted on our website and Facebook page, as well as materials lists, etc., as time allows, facilitating preparation. It's going to be a great year!! As always, "Attitude Adjustment" begins at 9, the meeting at 9:30. I'm looking forward to seeing you on the 11th!

Pam



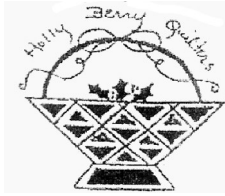
Schedule of Fall 2014 Meetings



September 11
9/18 Room not Available
September 25
October 9
10/16 Room not Available
October 23
November 13
December 11

Project dates:

October 2, October 30, November 20, December 4
(Room is not available on Oct. 16 and Nov. 6 and Dec. 18 is still being decided)



RECIPE CORNER

Taken from Holly Berry's
Online Cookbook
By **Anna Barrow**

Beef and Barley Soup

- 1 tbsp. vegetable oil
- *1 lb. beef stew meat cut into cubes
- 8 cups water
- 2 beef bouillon cubes
- 1/2 cup hot water
- 1 14-oz. can stewed tomatoes
- 1 cup carrots, sliced
- 1 cup chopped onion
- 1 cup chopped celery
- 1/2 cup barley
- 1/4 cup finely chopped parsley
- 1/2 tsp salt
- 1 1/2 tsp. pepper

In a large sauce pot, heat oil over medium heat. Add beef; cook stirring often until browned. Add water. Bring to a boil. Reduce heat, cover and simmer 1 hour or until meat is tender. Remove meat to bowl. With 2 forks, shred meat; set aside. In cup dissolve bouillon cubes in 1/2 cup water. Add to sauce pot with tomatoes, carrots, onions, celery, barley, parsley and salt and pepper. Stir in meat. Cover and simmer

1 1/2 to 2 hours or until vegetables are tender.

*I sometimes use a beef shank and 1/2 lb. of linguica. Cut up meat after it is Cooked.

Bits & Pieces



Information and Programs for Fall 2014

September 11

Welcome back to all our members. This is usually a very chatty meeting. Bring your show and tell items and any special ideas or projects you would like to incorporate into the second part of this year's agenda.

Secret Sister forms will be passed out to those who wish to participate. Mary Rhys and Pat Arcese will be managing it for this year. A request at the board meeting was made regarding those who go to Florida for the winter. If you are away in the winter and wish to participate, make arrangements for a friend to be responsible for your secret sister in your absence. Please make sure Mary is aware of what you are doing in that regard.

Another Mystery Quilt will be available for this year. It is a larger quilt, full bed size or queen, with additional border. Penny will be overseeing this project. We need to know how many are participating at the first meeting so she can make up packages of fabric requirements and pass out first step at the 25 Sept. meeting.

RULER REVIEW: Pat Arcese will review the process for borrowing a ruler, signing it out and returning it in a timely manner. Any one who wishes to donate a ruler to the box, please bring the ruler to the meeting so Pat can inventory it into our collection. There is a small number of rulers right now but we are hoping to build our collection. Our goal is to have the instructions for the use of each ruler as well. You all

know that rulers are pricey and if you are making one project - how great to just borrow a ruler.

ACCUQUILT: Jeanie Weinrich will review the process for borrowing, keeping it clean and returning so that others can enjoy. The cutter did get some use from members over the summer. We have a vast number of dies and also some members with dies that are willing to share. Remember we have pumpkins and fall leaves if you want to cut them out for fall projects. Please call Jeanie if you want something special brought to meeting.

September 25

LABEL DAY: Denise Condon will do some demos on different iron on labels. Everyone will have ability to make one or two labels coloring with perma marker.

We also will have some embroidered labels donated by a few members and will be up for a drawing - no cost.

We'll have a brief discussion about the information to be put on a label - size of label and much more.

The guild will purchase a couple of sets of perma gel markers but if you have some of your own - bring to meeting so you can color your labels.

Janet Sforza from Middleboro shop is offering many more quilting items at very reasonable prices (fabric was \$4:00 per yard). Come to this meeting and

SHOP-SHOP-SHOP

Oct 9

Large Auction and Ways and Means Combo:

Penny, Regina and Pam will

organize this daunting project. Bring your items as organized as possible, marking lengths of fabric etc. Scrap bags and small items will be done as Ways and Means. Any items related to sewing and knitting are welcome. More instructions will be given at Sept. meeting.

October 23

Adele Scott will be giving her "Tips, Tricks and Products" lecture. She also will have the new X ruler which was a big hit at the Manchester Show. She will set up 3 or 4 demo areas where we can try out some of the new items she will be showing us. She would like to start at 0930 and go until noon, so business matters should be really brief and NO show and tell that day. Adele is a wealth of information and very sharing in her knowledge. She has also waived all travel/mileage reimbursement for us as a courtesy. Many items will be for sale, accepting all forms of payment. Adele is our first speaker of the year so this is a meeting you should not miss.

November 13

Christmas Material Fat Quarter Raffle: We'll let you know prior to the raffle what you will need to bring.

Demo and Pattern for table topper and great Christmas gift iPad tablet holder, made with 1/2 yard of fabric.

December 11

Holiday Luncheon

Please bring your Secret Sister a little holiday gift and bring 3 sewing items (fabric, thread etc.) to play LCR - left, right, center.

Membership

Kathleen O'Grady

We welcome all quilters no matter how long they have been quilting to join our guild. If you know of anyone who may be interested in our guild, feel free to bring them to one of our meetings.

Dues for the 2014-2015 year are due by October 9. To renew, please complete the membership form that was emailed to you with this newsletter and return it to me with your dues payment of \$20.00 payable to Holly Berry Quilters' Guild.

I would also like to remind members that they are required to support our annual quilt raffle by purchasing \$20.00 worth of raffle tickets which they may later sell or keep for themselves.

I hope you all had a great summer and I look forward to seeing you at our meeting.

Barnstable County Fair

We want to thank all those who not only volunteered but also contributed their quilts for exhibit at the Barnstable Fair this year. Holly Berry members did very well in the awards department at the Cape Cod Fair this year.

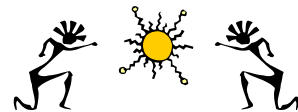


- Sue Moore: Myers Bowl, Best of Show, 2 blue ribbons, Tumbleweeds Award
- Cori Barrett: 2 blue ribbons, 1 3rd place ribbon
- Ursula Lincoln: 1 blue ribbon, 1 2nd ribbon, Crazy Quilters award
- Joanne Kurker: 2 blue ribbons
- Pat Arcese: 1 blue ribbon, 1 2nd place ribbon
- Pat Cairns: 1 blue ribbon,

Three members put their mystery quilts in the show. We had to point out to the judges that they were all the same design. They were amazed at how different they all looked and how well constructed they were. Congratulation to all!

We want you to join us for Project Day!

A number of our members are enjoying our project days, which is an open sew day at Cape Cod Fairgrounds on most Thursdays that we don't have a regular meeting. Members bring in whatever they are working on (sewing, knitting, etc.) and enjoy a day of sewing, sharing and socializing. The doors are open at 9:00. AM. It's fun to work with friends so we encourage you to **TRY IT OUT!**



Sunshine News:

Please be sure to let our Sunshine chairperson know at meetings when you know of someone in need of "Sunshine" and could use a cheerful note or remembrance from our guild.

SewPro

Sewing Machine Repair & Service

Michael Fischer
Mary Ann Fischer
P.O. Box 52
Monument Beach,
MA 02553-0052

www.sewprocapecod.com
sewprorepair@comcast.net

Hospitality

Mary Hayes

As in the past, we will circulate a sheet for members to sign up to bring a treat for the social period.

The holiday luncheon will be a catered affair with a minimum contribution of \$5 per member and the spring luncheon will be pot luck. The variety of dishes that we get to sample is a gourmet treat and we encourage everyone to make a few copies of their favorite recipe to share.

Girls in Uganda Make Good Use of Dresses

Below is a letter we received from Jean Trexler who collected and delivered the girls dresses we made during our 2013-14 year for girls in Uganda. I think we can all agree that this was a very worthy undertaking and all your efforts were greatly appreciated.

Last winter you ladies were so generous in making dresses that I sent to Uganda. Unfortunately, we never received any photos from that shipment. Pastor Samuel and his wife had a new baby born mid-January and right after that, he suffered from his recurring malaria for over 2 months. (he is much better now).

My daughter just took 135 dresses over 2 weeks ago and sent pictures back, as she was there as some were handed out. You will remember, you gave me a few bolts of fabric and the wonderful "red shoes" fabric can be seen here shown off by a very happy little girl!

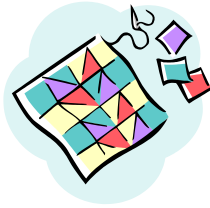
Thank you from all the recipients of your generosity!

Jean Trexler



A Treasure by Mildred Hatfield

It's more than a coverlet
More than a spread,
This beautiful quilt
That graces my bed.



It's laughter and sorrow,
It's pleasure and pain,
It's small bits and pieces
Of sunshine and rain.

It's a story I cherish
Of days that have been.
It's a door I can open
To live them again.

It's a bright panorama
Of scraps of my life –
It's moments of glory,
It's moments of strife.

Yes, it's more than a cover,
This much-treasured quilt.
It's parts pieced together
Of the life I have built.

You know you are a Quilter If.....

- There's more Fabric in the House than Food
- "Fat Quarters" are not the heaviest part of your body
- Your ironing board is always set up but you never iron clothes
- You think of your job as an interruption of your quilting time
- You pet Fabric
- People are always picking threads off you
- You can measure a scant 1/4 by eye
- "Featherweight" Doesn't mean Boxer
- You clean up your sewing room & your family thinks you are moving out



Upcoming Events



September

Herring Run Quilters' Guild

"With These Hands
- Celebrating Silver"
Saturday September
20 and Sunday Sep-
tember 21

Norwell Middle School, Route 123, Main Street,
Norwell, MA

www.herringrunquiltguild.com

Cape Cod Quilters

"Made in America"

Saturday, September 27 and Sunday, September 28 at
The Cultural Center of Cape Cod, 307 Old Main Street,
South Yarmouth, MA

www.capecodquiltguild.org

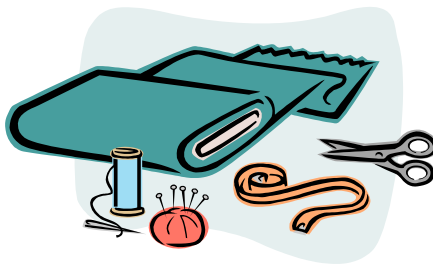
October

New England Quilt Museum

October 9 - December 31, 2014

"Down by the Old Mill Stream: Rhode Island Quilts"
18 Shattuck Street, Lowell Massachusetts 01852

www.nequiltmuseum.org



Rising Star Quilters

Saturday October 18 and Sunday October 19, 2014
Cary Hall, 1605 Massachusetts Avenue, Lexington, MA
02420

www.risingstarquilters.org

Tewksbury Piecemakers

"Our Material World"

Tewksbury Senior Center, 175 Chandler Street, Tewksbury, MA

www.tewksburypiecemakers.com

Wayside Quilters Guild 2014 Quilt Show

Saturday October 18 and Sunday October 19, 2014
Lincoln Sudbury Regional High School, 390 Lincoln Road,
Sudbury, MA

www.waysidequilters.org

Burlington Quilters Annual Quilt Show

October 25 - 26, 2014

Middlesex Community College Campus Center,
591 Springs Rd., Bedford, MA

www.burlingtonquiltersguild.org

November

A Quilters' Gathering

November 6-9, 2014

Radisson Hotel Manchester
700 Elm Street, Manchester, NH

www.aquiltersgathering.com